



# MONTHLY MEMBERSHIP PROGRESS REPORT

District 322 E

Results as of: 11/30/2018

GMT: SWADESH RANJAN SAHA

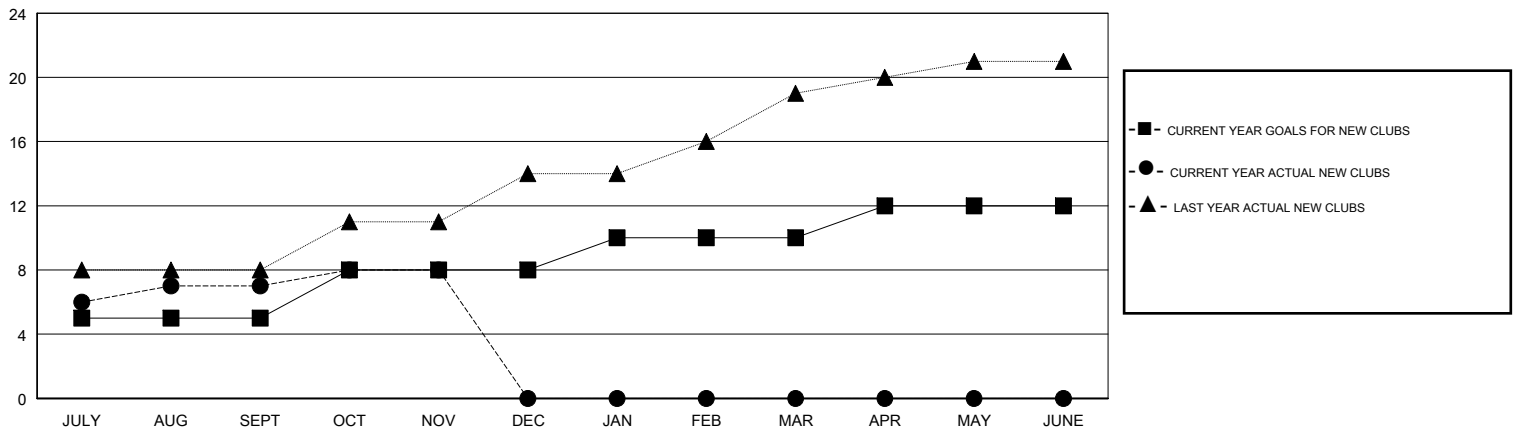
LOCATION INDIA

GMT CA

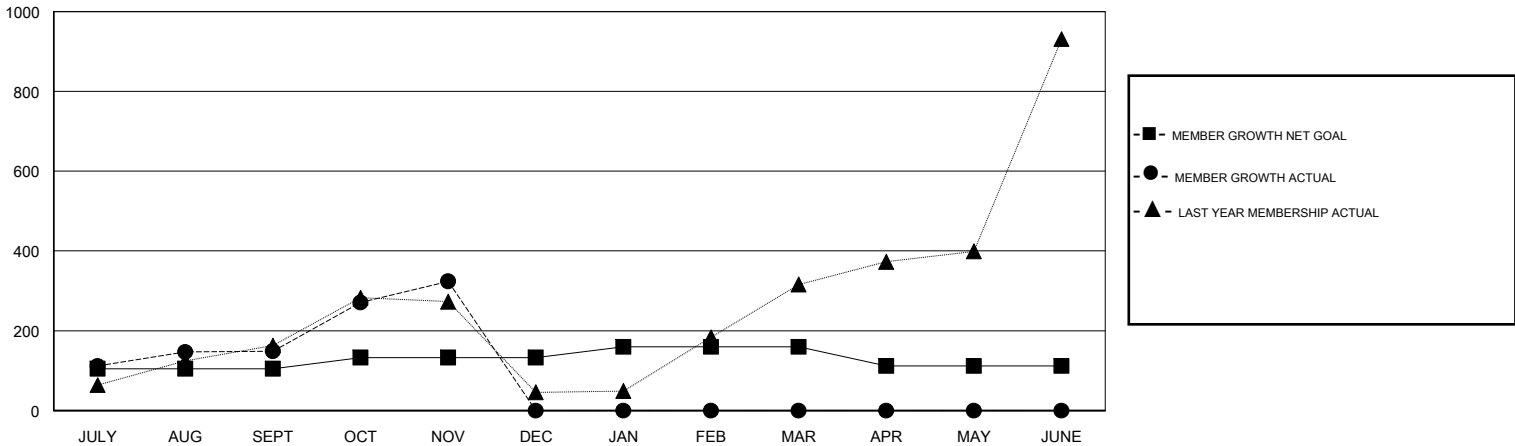
Clubs			
RESULTS FOR 2018-2019			
QUARTER	NEW CLUB GOAL	NEW CLUBS	DROPPED CLUBS
JULY/AUG/SEPT	5	7	0
OCT/NOV/DEC	3	1	0
JAN/FEB/MAR	2	0	0
APR/MAY/JUNE	2	0	0

Members			
RESULTS FOR 2018-2019			
QUARTER	MEMBER GROWTH NET GOAL	MEMBER GROWTH ACTUAL	DROPPED MEMBERS ACTUAL (including transfers)
JULY/AUG/SEPT	105	260	103
OCT/NOV/DEC	28	215	39
JAN/FEB/MAR	27	0	0
APR/MAY/JUNE	-48	0	0

GOALS AND ACTUAL NEW CLUBS CUMULATIVE



GOALS AND ACTUAL MEMBERS CUMULATIVE



DROPPED CLUBS: 0	53 CLUBS OF 132 ADDED 1 OR MORE NEW MEMBERS	<u>GENDER DISTRIBUTION</u>	
DROPPED MEMBERS		MALE	3,415 (67.05%)
DECEASED	6	FEMALE	1,678 (32.95%)
CLUB CANCELLED	0	Women Percentage Fiscal Year Goal: 37%	
OTHER	136	TOTAL FAMILY UNIT MEMBERS	2,040
TOTAL	142	FAMILY MEMBERS PAYING HALF DUES	1,107

[CLICK HERE FOR CUMULATIVE MEMBERSHIP DATA](#)